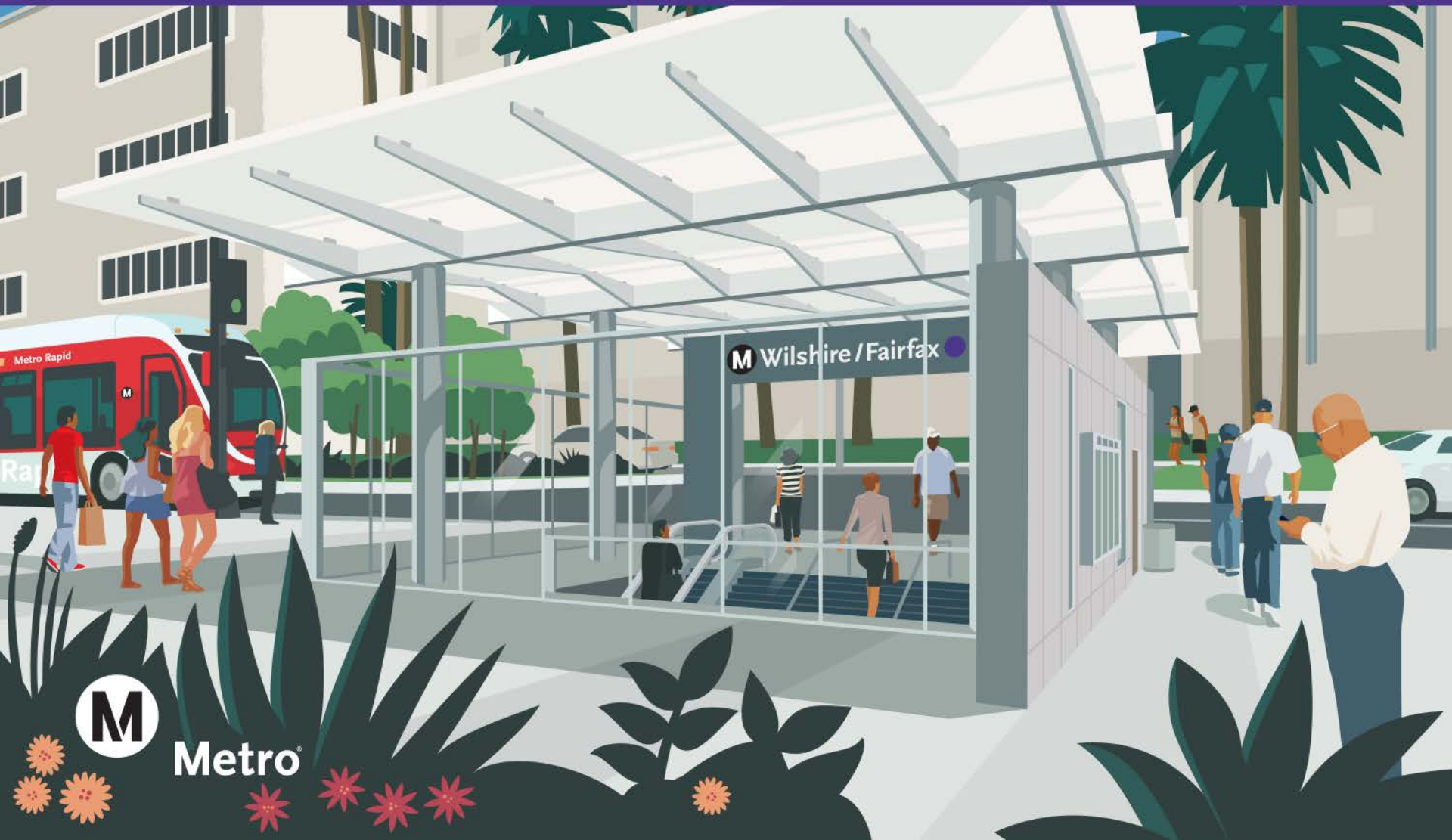


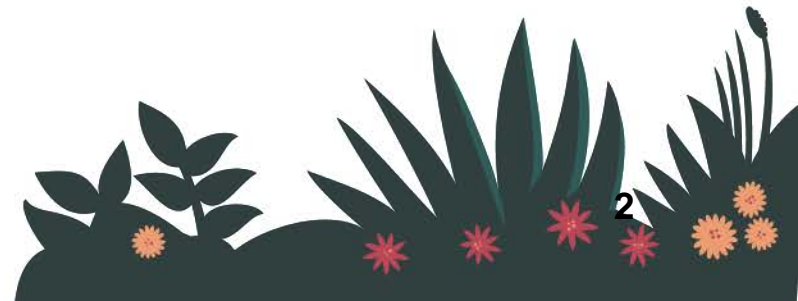
Purple Line Extension

Section 1 Construction Community Meeting March 19, 2015



Tonight's Agenda

- Introduction: Skanska, Traylor, Shea (STS)
- Advanced Utility Relocation Update and Look-Ahead
- Tree removal and replacement overview
- Eat, Shop, Play Local Video
- Business Interruption Fund
- Breakout session Q&A



Section 2

New Starts Engineering phase of the FTA Capital Investment Grant Program

	Under Construction	Forecasted Schedule	
	Section 1	Section 2	Section 3
Length	3.9 Miles	2.55 Miles	2.48 Miles
New Stations	Wilshire/La Brea Wilshire/Fairfax Wilshire/La Cienega	Wilshire/Rodeo Century City/ Constellation	Westwood/UCLA Westwood/VA Hospital
Pre-Construction Activities	Current - 2016	2015 - 2018	2025 - 2027
Construction	2015 - 2023	2019 - 2026	2027 - 2035
Operations	2024	2026	2035
			3

Design-Builder Introduction: Skanska, Traylor, Shea (STS)

STS JV Team



SKANSKA • TRAYLOR • SHEA

Organization

STS brings a deeply rooted commitment to underground safety. Our partners are world-class designers and builders, proven underground performers, Los Angeles and Metro experienced, and financially strong. Our partners have worked together on many projects throughout our history in Los Angeles and throughout the country. This past experience enables our team to flawlessly execute Metro's Westside project.

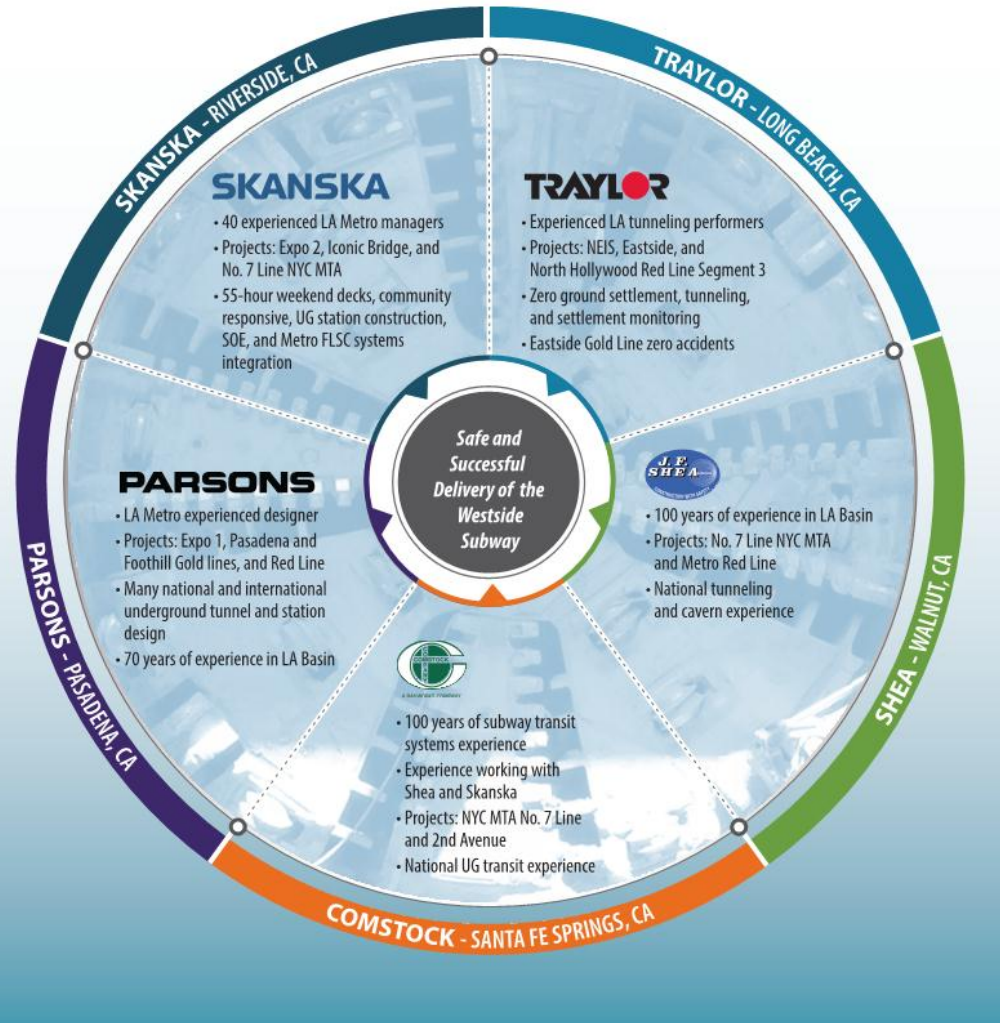
Risk Management

STS has a strong risk management approach for the Westside project. Managing risk will help Metro, STS, and key stakeholders in providing the best value and minimizing changes.

This risk management approach will be led by our senior team and headed by the Risk Manager. We have identified every risk that will or could be encountered during the design-build and operation of this project. Our primary method is to establish a Risk Registry, which is included in Section H of this proposal. We will continue to collaborate with Metro staff to identify items and manage for the design and construction risk.

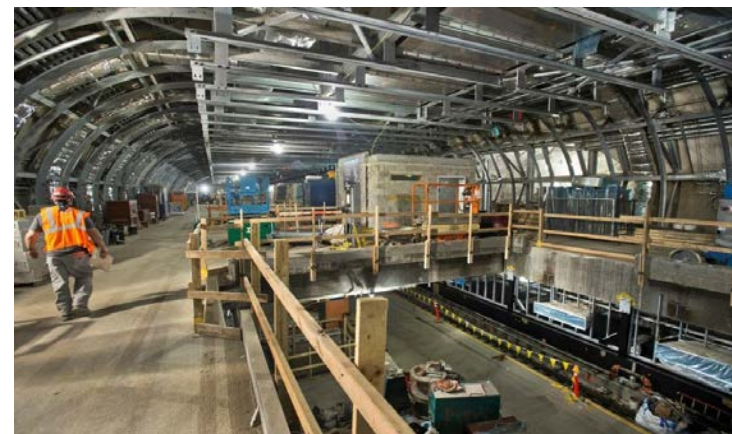
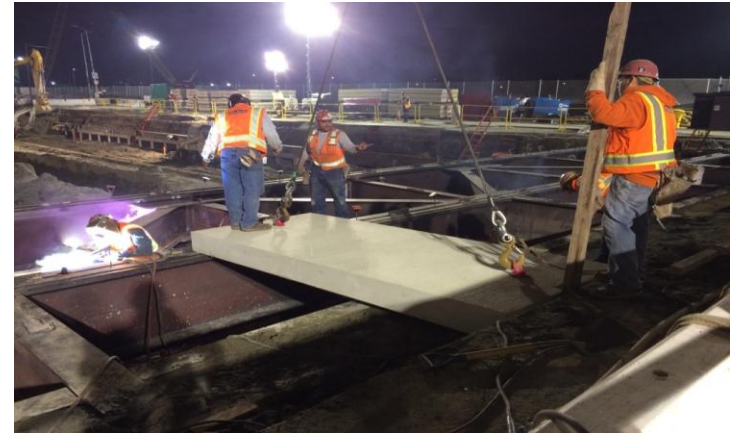
"Dear John (McDonald):
Congratulations
 to you, your staff and your workforce
 on
 the **successful**
 completion
 of the NEIS **Project**.
 Your **steady,** **guiding**
hand was a **major factor** in the
 this **dangerous** and **difficult**
project.
 Much like a coach of a
winning team,
 your **guidance**
 and **attention**
 to detail dictated
 this **safe** and **favorable**
outcome"

Byron M. Ishkanian, PE, CSP, NEIS OCIP
 Safety Team - Aon Mine and Tunnel Safety Engineer



Purple Line Extension, Section 1

Decks/Underground Station



Tunnel Boring Machines (TBM)



Advanced Utility Relocation Project Update and Look-Ahead



West and East Segment Assignments

- West Segment, Mindy Lake
 - Wilshire/La Cienega
 - Wilshire/Fairfax
- East Segment, Michael Cortez
 - Wilshire/La Brea
 - Tie-in at Wilshire/Western Station

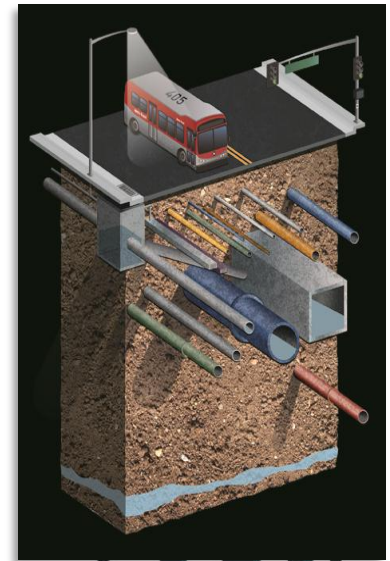


Metro®

Segment Divider

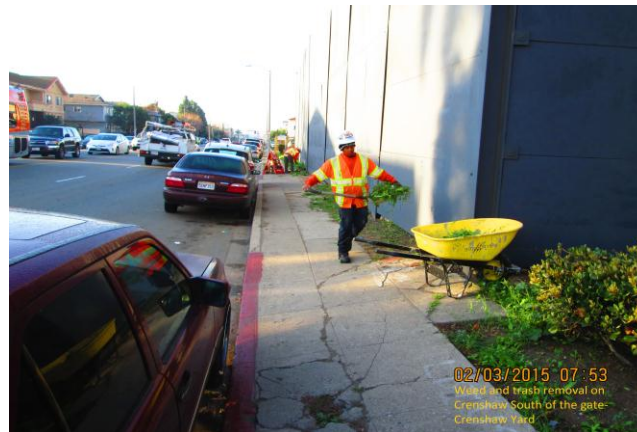
Tie-in at Western Station

- Property Acquisition
 - Ongoing: Property acquisition on NE corner of Wilshire and Manhattan Place
- Pre-Construction
 - As early as April 2015: Geotechnical Boring
 - Monday-Friday, 9am-3:30pm
- Advanced Utility Relocation
 - Anticipated to begin as early as 2016



Crenshaw Yard Staging Site Wilshire/Crenshaw

- Will be used throughout Section 1 utility relocation and construction
- Mitigation Efforts and Maintenance:
 - Right Turn Only signs at Lorraine Gate
 - No Metro Contractor Parking on City Street signs
 - Noise awareness training
 - Nightly noise readings
 - Maintenance inside and outside of yard



La Brea Station



Metro



Rendering shows length of the La Brea underground station box on Wilshire Blvd from Orange Dr to Detroit St

La Brea Station

Advanced Utility Relocation (AUR)

- SoCal Gas: Work continues on Wilshire between La Brea and Detroit.
- AT&T Cable pulling: Wilshire between Mansfield and Sycamore.



Photos of recent AUR work for the Wilshire/La Brea Station

La Brea Station Construction

North La Brea Staging Yard

April 2015

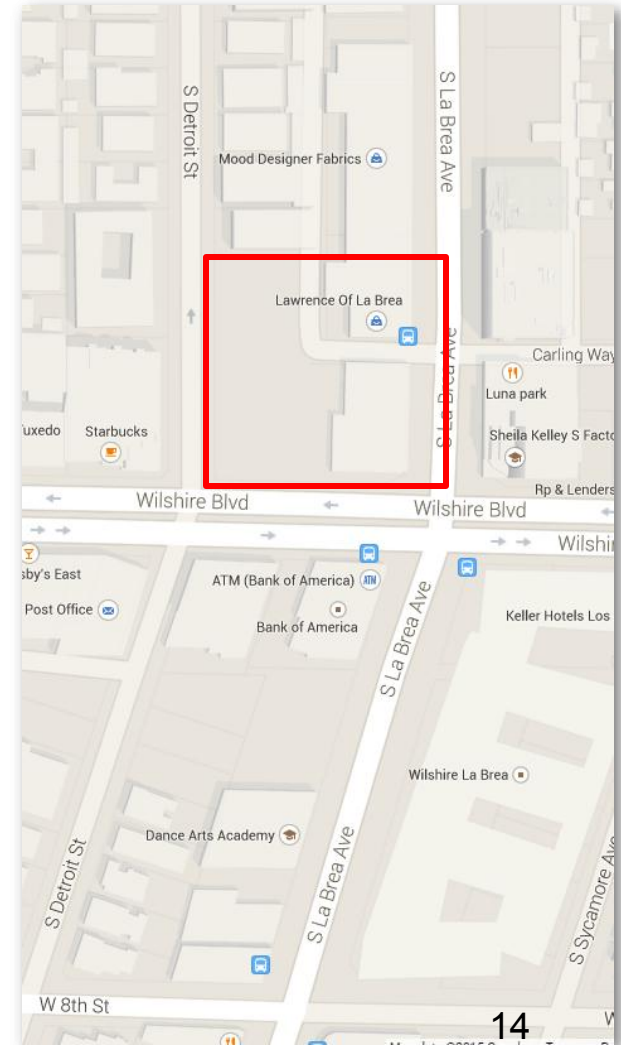
Day Work (7am-3:30pm)

- Detroit Parking lot permanently closing on April 1
- Temporary fence to be installed
- Tree Removal
- Former Customer Service Center Art Removal
- Construct temporary alley relocation to exit west to Detroit at northern end

May-Summer 2015

Day Work (7am-3:30pm)

- Close Carling Way Alley at La Brea
- Demolition of former Metro Customer Service Center, Blockbuster and Lawrence of La Brea buildings
- Undergrounding of overhead utilities in Detroit lot
- Construct sound wall



La Brea Station Construction

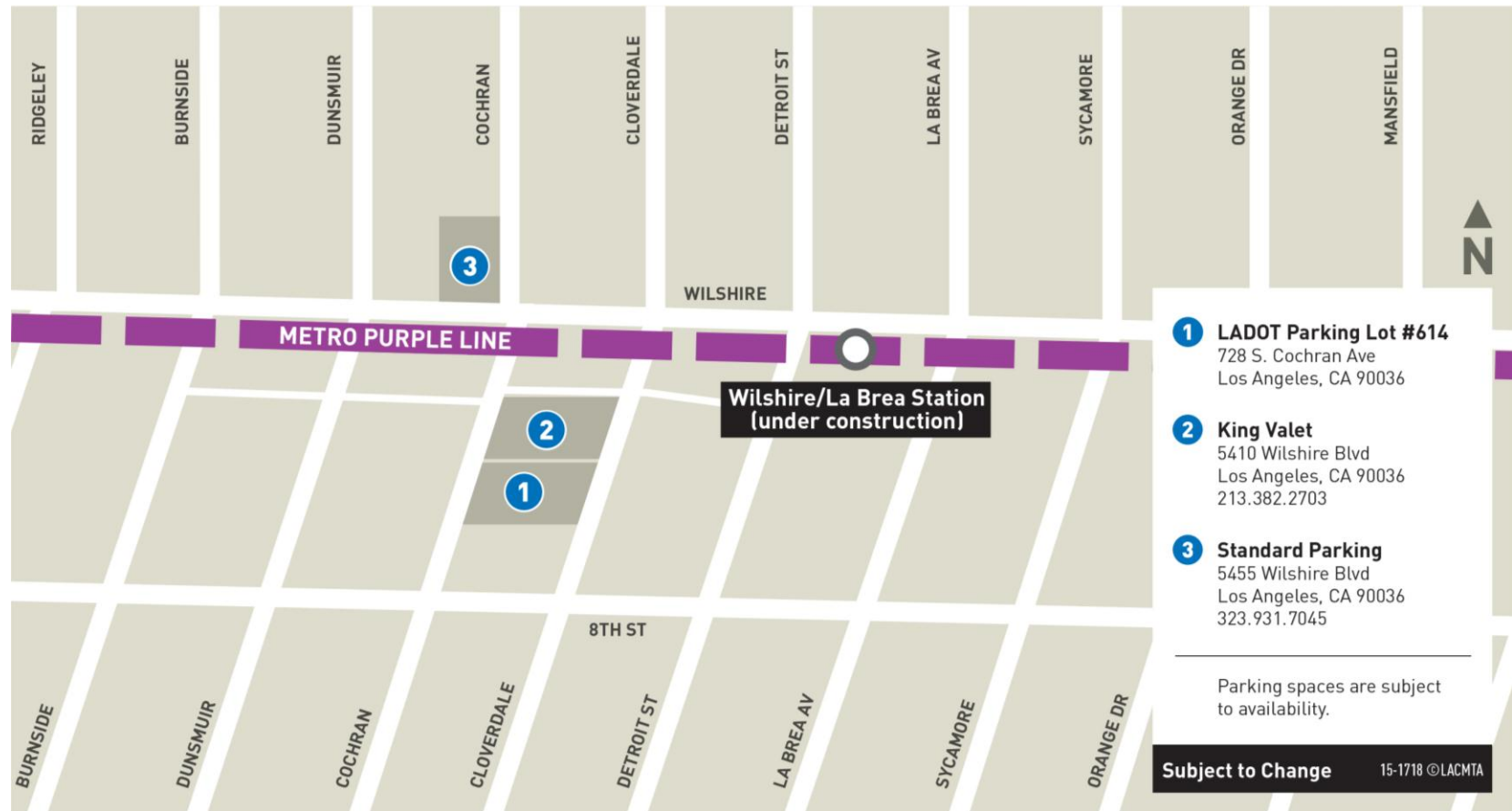
North La Brea Staging Yard

April through Summer 2015

- Detroit Parking lot permanently closing on April 1
- Temporary fence to be installed
- Construct temporary alley relocation to exit west to Detroit at northern end
- Close Carling Way Alley at La Brea
- Demolition of former Metro Customer Service Center, Blockbuster and Lawrence of La Brea buildings
- Construct sound wall



La Brea Station Parking Facilities

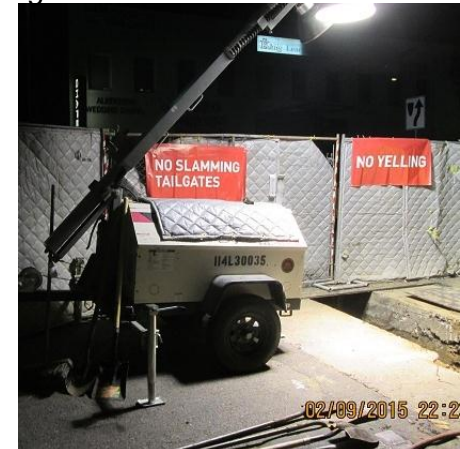


La Brea Station Mitigation

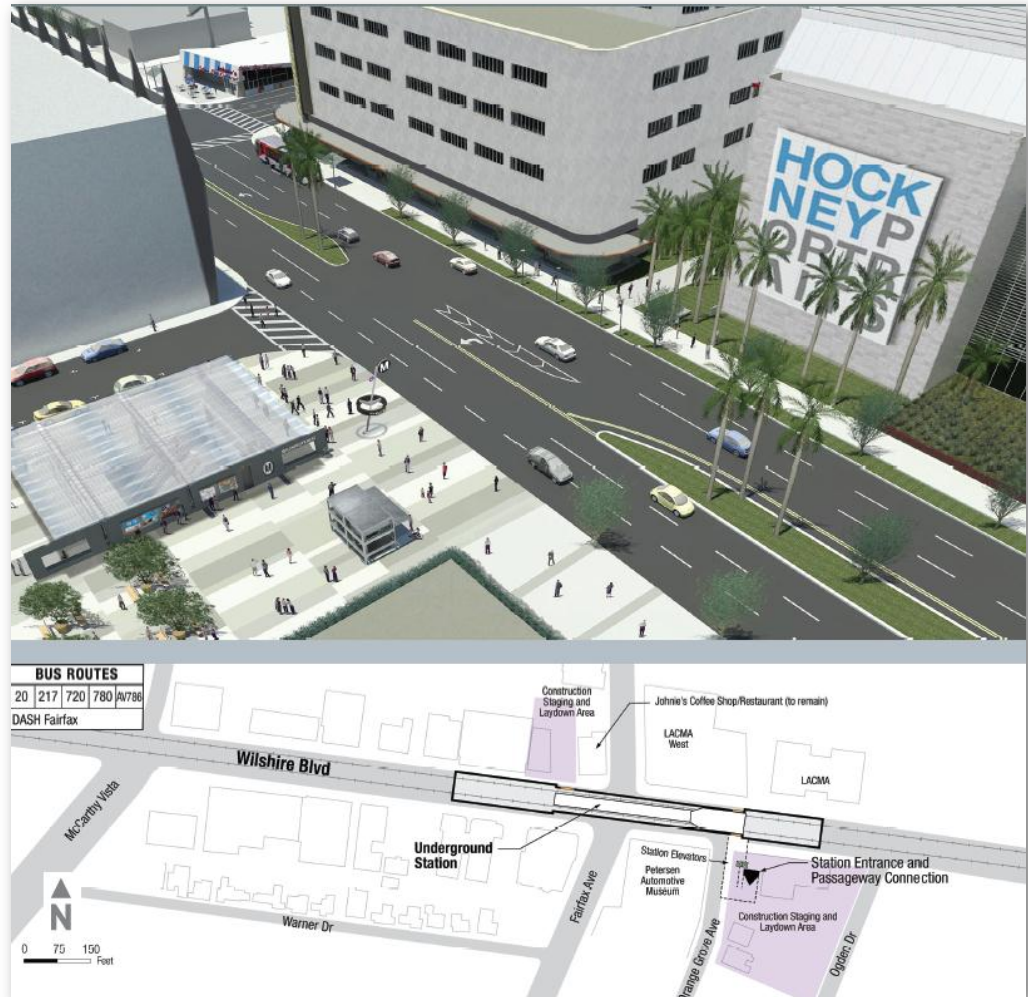
- Business and resident advanced communications
- Night-time mitigation efforts
 - Vehicles without low-impact backup alarms at night (8pm to 6am) are not allowed.
 - Noisy activities such as saw-cutting, jack hammering, pavement breaking, vibratory compaction rolling are not allowed after 11pm.
 - “No Yelling,” “No Slamming Tail Gates” and “Noise Control Zone” signs are placed inside temporary sound wall barriers.



Photos of Detroit Lot signage, low-impact backup alarm and noise mitigation at Wilshire/La Brea



Fairfax Station



Metro

Rendering shows length of the Fairfax underground station box on Wilshire Blvd from San Diego Way to just west of Ogden Dr.

Fairfax Station

What's Happened So Far

Metro Advanced Utility Relocation (AUR) Work

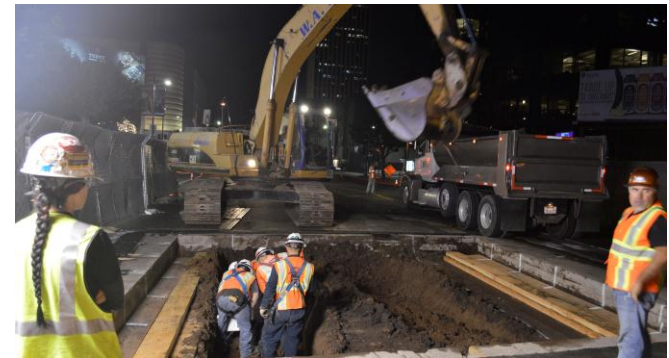
- Fiber-optic cable to be completed end of March
- Electrical and water work continues
- Work Days and Hours:

Day work:	
Monday – Friday:	9AM - 3:30PM
Saturday:	8AM - 6PM*
Night work:	
Sunday – Thursday:	8PM - 6AM
Friday:	10PM- 8AM

**as needed*

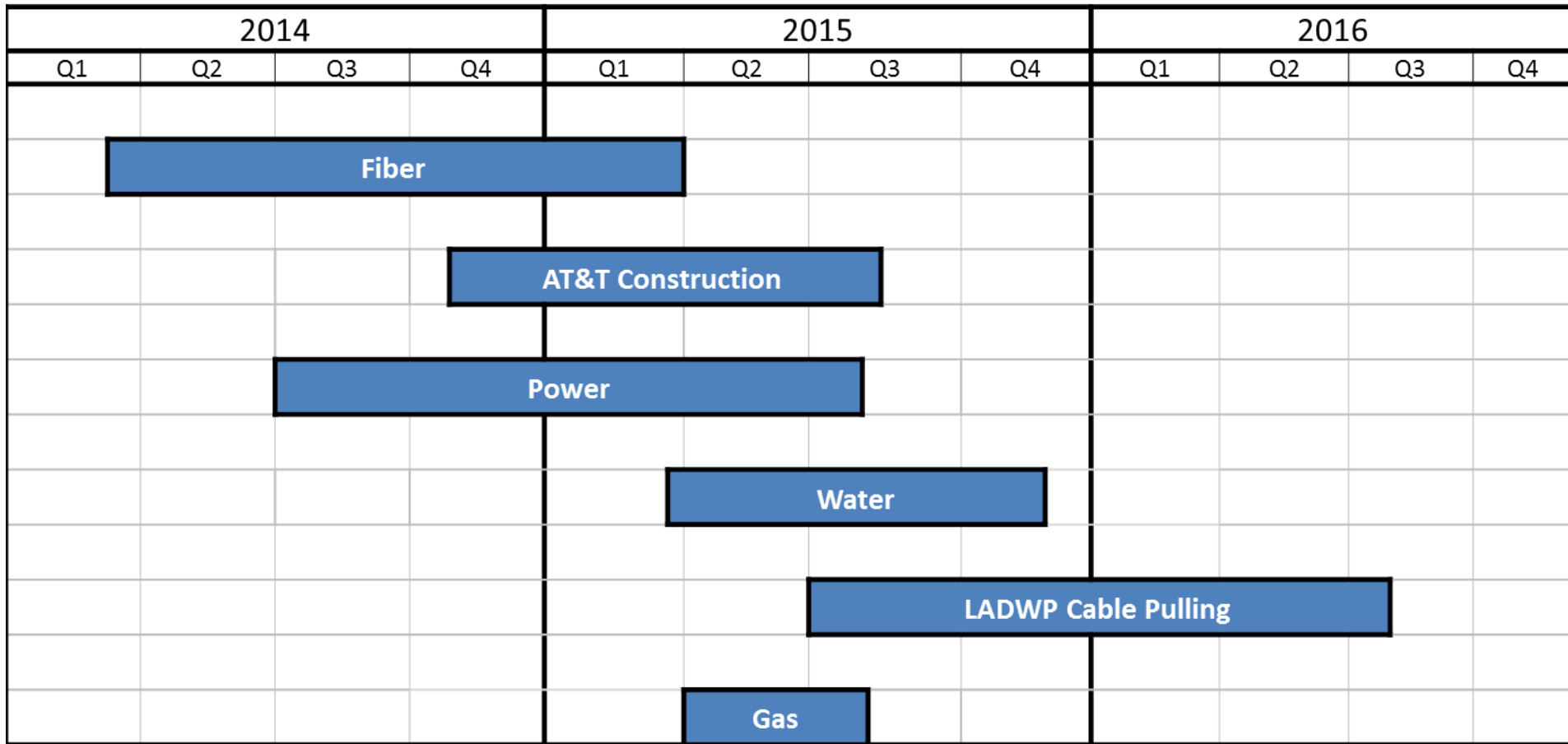


Photos of recent AUR work for Fairfax Station



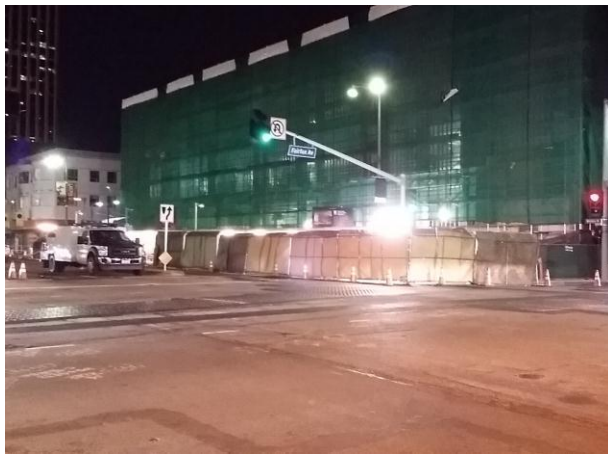
Fairfax Utility Relocation 2 Years

*Schedule is subject to change. Updated as of March 2015.



Fairfax Station Mitigation

- Majority of paving re-scheduled from night work to Saturdays or to be completed prior to 11 pm.
- Activities are monitored throughout each shift.
- Additional sound blankets placed when needed.
- Work activities are adjusted to reduce noise levels.
- “Businesses Are Open During Construction” signs are displayed.



Photos of noise mitigation at Wilshire/Fairfax

La Cienega Station



Metro



Rendering shows length of the La Cienega underground station box on Wilshire Blvd from La Cienega to Tower Dr.

La Cienega Station

What's Happened So Far

Metro Advanced Utility Relocation (AUR) Work

- Fiber relocation on Wilshire between Gale and San Vicente
- Sewer line potholing on Wilshire between Hamilton and Tower



Photos of recent AUR work for the La Cienega Station



Metro

La Cienega Utility Relocation 30 Months

***Schedule is subject to change. Updated as of March 2015.**

2014				2015				2016				2017			
Q1	Q2	Q3	Q4	Q1	Q2	Q3	Q4	Q1	Q2	Q3	Q4	Q1	Q2	Q3	Q4
	Fiber														
				Water, Sewer, Storm, Drain, Power											
				AT&T Construction											
					Gas										

La Cienega Station

What's Next

March through June 2015

- AT&T conduit placement occurs during the day and at night when necessary
- Potholing activities occur during daytime hours

Days and Hours	
Monday – Friday:	7AM - 4PM
Saturday-Sunday:	9AM - 6PM
Proposed Night-time Hours:	1AM – 9AM



Sample photo of AUR work that will occur at Wilshire/La Cienega

La Cienega Station Mitigation

- “Businesses are Open During Construction” signs are displayed
- Additional signage placed for The Saban Theater
- Parking relocation program
- Plate lock system utilized for sidewalk steel plates



Photos of mitigation efforts at Wilshire/La Cienega

Noise Mitigation

Night time work permit: Ambient +5 Db

Crenshaw Yard



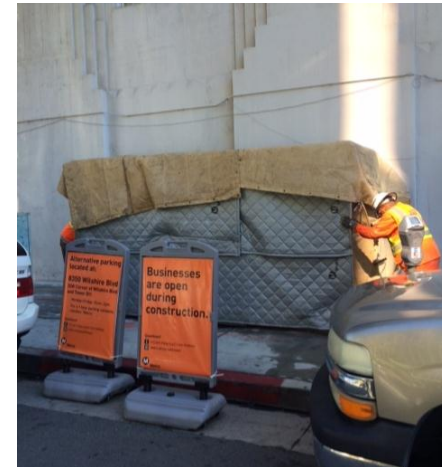
Wilshire/Fairfax



Wilshire/La Brea



Wilshire/La Cienega

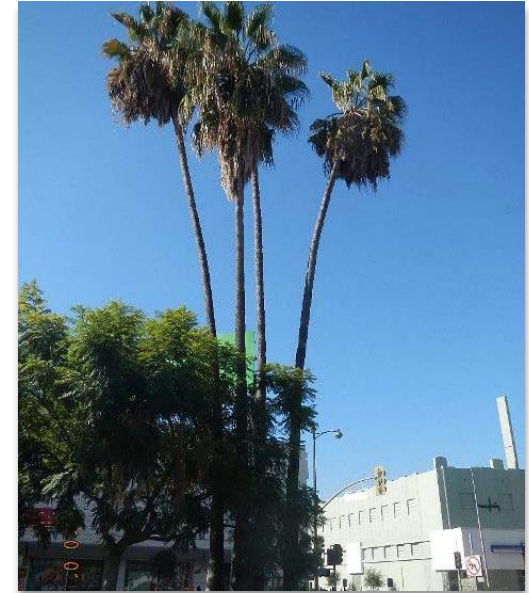


Metro

Tree Removal, Replacement and Landscape Overview

Tree Removal and Replacement

- Estimate 90 trees need to be removed in public Right-of-Way
 - 12 at Western Station Tie-in
 - 37 at La Brea Station
 - 52 at Fairfax Station
- Trees evaluated for relocation potential
- Metro has reached out to 30 organizations to make trees available for donation
 - Tree People, Santa Monica Mountains Conservancy, Griffith Park
- Will relocate some trees to Crenshaw Yard



Mexican fan palms around Wilshire/La Brea

Tree Removal and Replacement

City of Los Angeles Process

- Metro will submit tree removal application to Urban Forestry Division (UFD)
- Notices will be posted on trees
- Application will be heard by Board of Public Works
- Trees will be removed incrementally based on construction phasing
- Anticipate first removals at La Brea in spring 2015
 - Fairfax removals in summer 2016
 - La Cienega removals in late 2016



Lagerstroemia around Wilshire/Western

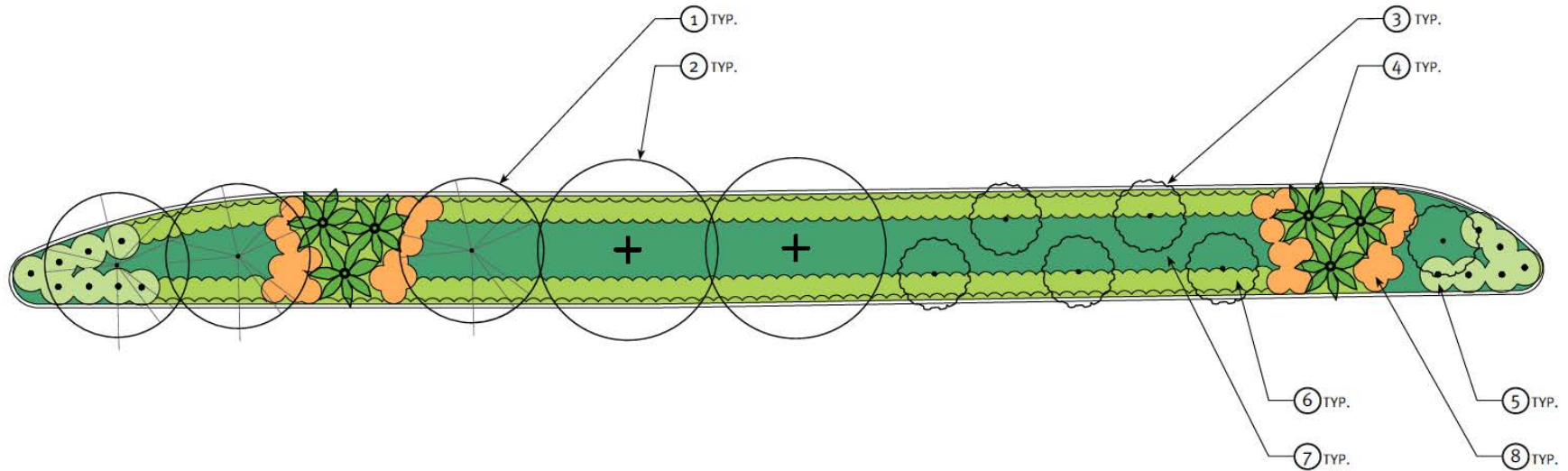
Tree Removal and Replacement Landscape Plan Overview

- Metro will replace all trees 2:1
- Design-Builder responsible for landscape plan
 - Reviewed existing plan to ensure all trees need to be removed
- Landscape palate dictated by existing palate and City requirements
- Miracle Mile Civic Coalition will be included in draft discussions and has been involved with the tree removal and replacement plan
- Workshops will be hosted by Design-Builder for community input
- City of Los Angeles has agreed to 36" box trees and 20-25' palms
- New irrigation, controllers and lighting for affected areas
- Furnish and install new Miracle Mile median signs and bollards for protection



Phoenix dactylifera around
Wilshire/Fairfax

Landscape Exhibits



EXISTING PLANTING



1. *Chorisia speciosa*
Floss Silk Tree



2. *Jacaranda mimosifolia*
Jacaranda



3. *Lagerstroemia* (white)
Crape Myrtle



4. *Washingtonia robusta*
Mexican Fan Palm



5. *Agave attenuata*
Foxtail Agave



6. *Gazania* (yellow)
Gazania



7. *Pittosporum tobira*
'Wheeler's Dwarf'
Wheeler's Dwarf
Japanese Mock Orange



8. *Strelitzia reginae*
Bird of Paradise

Eat, Shop, Play Local

- Provides access to information about business and exclusive offers
- Community pledge to participate
- Currently 30+ businesses enrolled
- Learn more at metro.net/eatshopplay

The screenshot displays the 'EAT SHOP PLAY' website interface. At the top, the title 'EAT SHOP PLAY' is prominently displayed in large, colorful letters (EAT in green, SHOP in pink, PLAY in orange). Below the title are three tabs: 'CRENSHAW/LAX', 'PURPLE LINE EXTENSION', and 'REGIONAL CONNECTOR'. A sub-header reads 'Support local businesses. Click to explore discounts by project or category.' Below this, there are three main categories: 'EAT' (green), 'SHOP' (pink), and 'PLAY' (orange). Under 'EAT', there are four listed offers, each with a pink circular icon: 1. \$200 Wilshire: Go Metro and receive first month rent free! 2. AmeriPro Auto Body: Go Metro and receive 10% discount 3. Ann Bridges Art Studio: Go Metro and receive 50% discount on "Introduction to Acrylic Painting." A \$60 class offered for \$30! 4. Beverly Hills Liquor Wine and Deli: Go Metro and receive 10% off any purchase over \$5! To the right of the offers is a map of the Los Angeles area, showing the locations of the businesses and the transit projects. The map is color-coded to match the project tabs. At the bottom, there are three sections for transit projects: 'Crenshaw/LAX Transit Project', 'Purple Line Extension Transit Project', and 'Regional Connector Transit Project'. Each section includes a link to an 'Overview Video' and a link to 'Take the Pledge/Submit Drawing Entry'. Social media icons for Twitter and Facebook are also present.

EAT SHOP PLAY

CRENSHAW/LAX PURPLE LINE EXTENSION REGIONAL CONNECTOR

Support local businesses. Click to explore discounts by project or category.

EAT SHOP PLAY

VIEW ALL

- 8200 Wilshire
Go Metro and receive first month rent free!
- AmeriPro Auto Body
Go Metro and receive 10% discount
- Ann Bridges Art Studio
Go Metro and receive 50% discount on "Introduction to Acrylic Painting." A \$60 class offered for \$30!
- Beverly Hills Liquor Wine and Deli
Go Metro and receive 10% off any purchase over \$5!

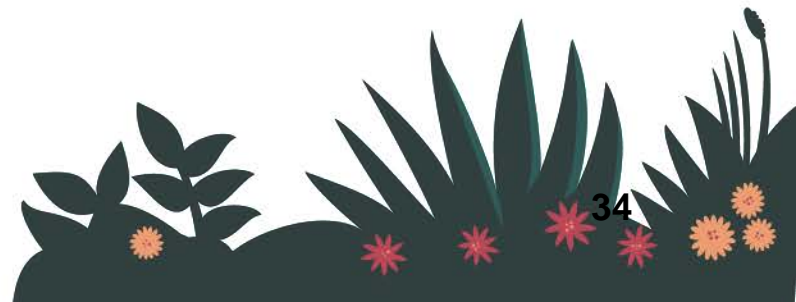
Crenshaw/LAX Transit Project
Overview Video
Take the Pledge/Submit Drawing Entry

Purple Line Extension Transit Project

Regional Connector Transit Project

Eat, Shop, Play Local

[Video](#)



Business Interruption Fund (BIF)

- Metro Board established a pilot BIF for “mom and pop” businesses located along Section 1 of the Purple Line Extension
- Eligible Businesses
 - For-profit business or non-religious, non-profit organizations
 - Located immediately adjacent to a Metro rail corridor and directly affected by Metro construction
 - Businesses that meet technical requirements to participate such as but not limited to:
 - 25 or fewer total employees
 - At least two years of continuous operating history immediately adjacent to a specified Metro rail construction project
 - Solvent
 - In good standing with local, state, and federal taxing and licensing authorities
 - Able to produce relevant financial records demonstrating a loss of business revenue directly related to the period of construction disruption
- **To apply contact: Pacific Coast Regional Small Business Development Corp (PCR)**
Website: www.pccorp.org Phone: 213-739-2999 ext. 223



Future Community Meetings

- Next Section 1 Community Meeting: May 21, 2015 at the Temple Beth Am on 1039 S La Cienega Blvd.
 - Community Meetings held on the 3rd Thursday of every other month
 - Community Meeting location will rotate along the alignment
 - Section 1 Advisory Group will meet as needed to discuss station specific issues. Meetings will be open to the public.
- Sign up for the newsletter to receive project updates!

Stay in Touch

	www.metro.net/purplelineext
	twitter.com/purplelineext
	facebook.com/purplelineext
	213.922.6934
	purplelineext@metro.net